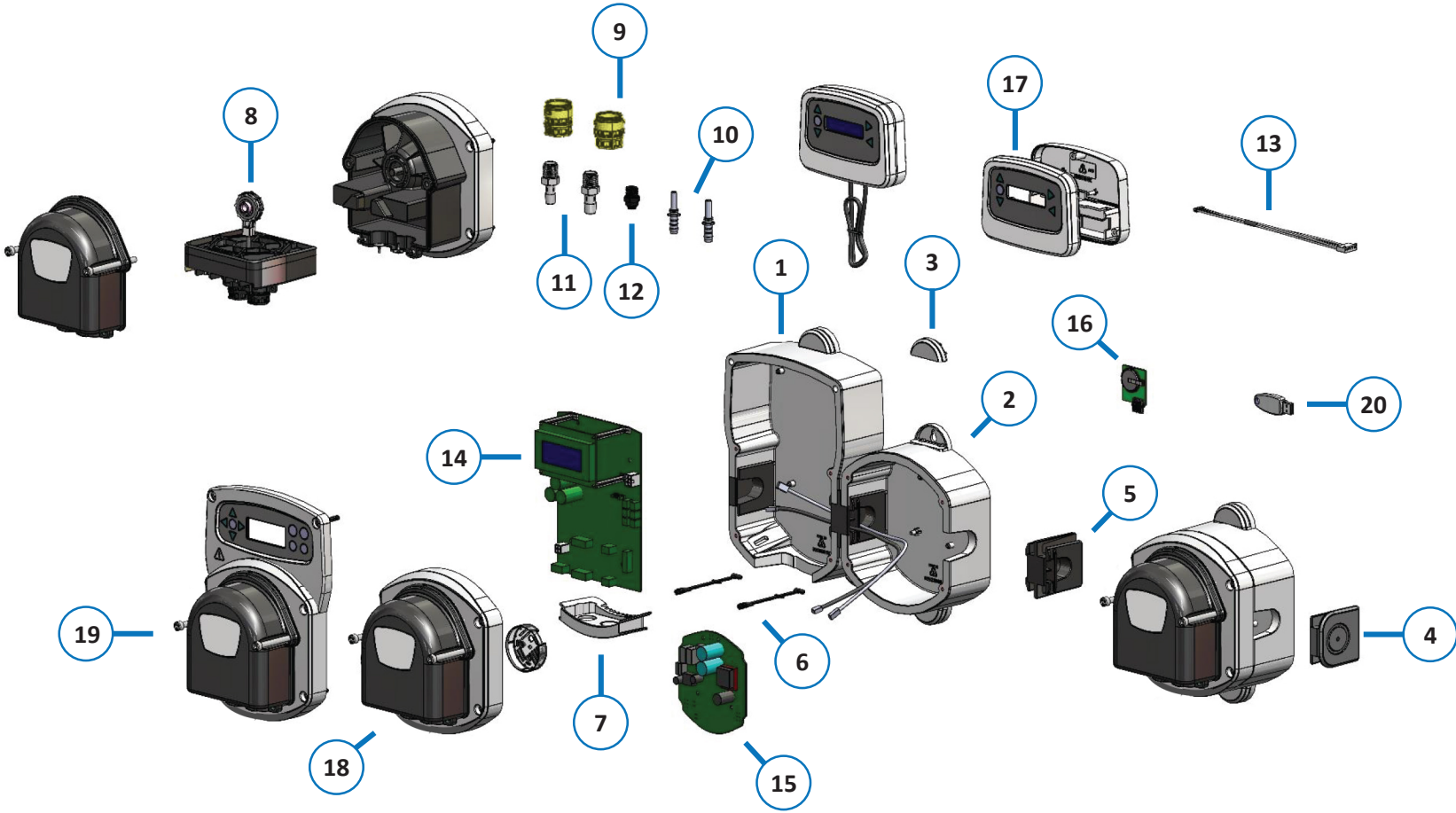


BRIGHTWELL

REVOLUTIONARY DISPENSING SOLUTIONS



Brightlogic Membrane Spares Diagram

Item	Stock Code	Description
1	XSB052/U9	BRIGHTLOGIC HIGH FLOW ENCLOSURE
2	XSB054/U9	BRIGHTLOGIC HIGH FLOW PUMP ENCLOSURE
3	XSB060/U9	BRIGHTLOGIC SCREW COVERS -10PK
4	XSB061/U9	BRIGHTLOGIC END WEDGES -10PK
5	XSB062/U9	BRIGHTLOGIC LINK WEDGES -10PK
6	XSB063/U9	BRIGHTLOGIC HINGE STRAP (10PK)
7	XSB065/U9	BRIGHTLOGIC CABLE ENTRY (HF)
8	XSB722/U9	MEMBRANE CLAMP ASSEMBLY 3/8 NPT
9	XSB732/U9	MEMBRANE PURPLE CONNECTORS IN & OUT EPDM - (5 PK)
	XSB734/U9	MEMBRANE YELLOW CONNECTORS IN & OUT EXT VITON - (5 PK)
10	XSB267/U9	3/8 STRAIGHT 10MM BARBED TUBE CONNECTOR BLACK - (10PK)
	XSB268/U9	3/8 STRAIGHT 3/8 BARBED TUBE CONNECTOR WHITE - (10PK)

Item	Stock Code	Description
11	XSB718/U9	10MM BARBED CONN. 3/8 FIT - 10PK
12	XSB720/U9	QUICK CONNECTOR 3/8 NPT TO FIT IN MEMBRANE PUMP - (10PK)
13	XSB151/U9	BRIGHTLOGIC 240MM MOTOR LOOM (5 PK)
14	XSB003/U9	BRIGHTLOGIC LAUNDRY BOARD
15	XSB004/U9	BRIGHTLOGIC ADD ON BOARD
16	XSB014/U9	REAL TIME CLOCK PCB (1PK)
17	XSB069/U9	FORMULA SELECT COVER & MEMBRANE
18	XSB700/Q/U9	MEMBRANE ADD-ON LID ASSY
19	XSB701/Q/U9	BRIGHTLOGIC HF MEMBRANE CONTROL LID ASSY
20	WLCOM-WBT/U9	USB PC BLUETOOTH DONGLE

BRIGHTWELL DISPENSERS INC.

9858 Britton Street, Lenexa, Kansas, 66219, USA

T (+1) 913-956-4909 F (+1) 913-948-9470 E sales@brightwell-inc.com W brightwell-inc.com

Registered in the USA

BRIGHTWELL
REVOLUTIONARY DISPENSING SOLUTIONS