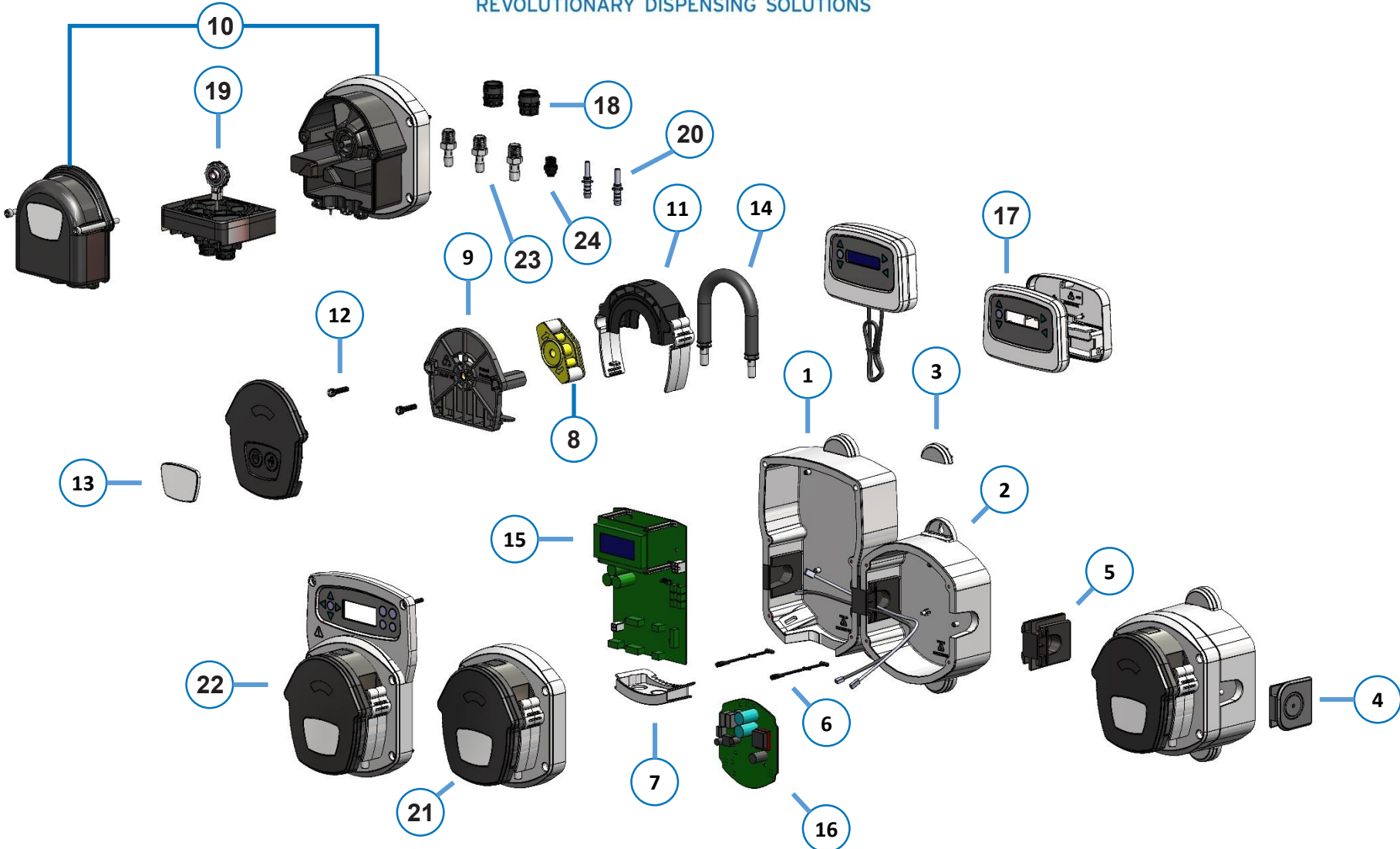


BRIGHTWELL

REVOLUTIONARY DISPENSING SOLUTIONS



BrightLogic High Flow and Membrane Pump Spares Diagram

Item	Stock Code	Description
1	XSB052	BRIGHTLOGIC HI-FLOW ENCLOSURE
2	XSB054	BRIGHTLOGIC HF PUMP ENCLOSURE
3	XSB060	BRIGHTLOGIC SCREW COVERS -10PK
4	XSB061	BRIGHTLOGIC END WEDGES -10PK
5	XSB062	BRIGHTLOGIC LINK WEDGES -10PK
	XSB062/FR	FR BRIGHTLOGIC LINK WEDGES -10PK
6	XSB063	BRIGHTLOGIC HINGE STRAP -10PK
7	XSB065	BLOGIC CABLE ENTRY (HF)
8	XSB120	LOGIC HF PUMP ROTOR (10pk)
9	XSB201	BRIGHTLOGIC HF PUMP BODY 5PK
10	XSB735	MEMBRANE PUMP COVER & BACKPLATE
11	XSB206	HF PUMP RACE & CLIPS
12	XSB207	L PUMPHEAD SCREWS (SPH)
13	XSB211	BRIGHTLOGIC PLAQUE X10
	XSB214	BLOGIC PLAQUE 160PK - 1 Colour logo
	XSB215	BLOGIC PLAQUE 160PK - 2 Colour logo

Item	Stock Code	Description
14	XSB333	TUBE : HF G-SIL : 10PK
	XSB333Q	TUBE : HF G-SIL : 10PK
	XSB334	TUBE : HF G-SIL : 50PK
	XSB334Q	TUBE : HF G-SIL : 50PK
	XSB370	TUBE : HF B/CHEM : 2PK
	XSB373	TUBE : HF B/CHEM : 10PK
	XSB373Q	TUBE : HF B/CHEM : 10PK
	XSB374	TUBE : HF B/CHEM : 50PK
	XSB374Q	TUBE : HF B/CHEM : 50PK
15	XSB019	BRIGHTLOGIC LAUNDRY BOARD
16	XSB020	BRIGHTLOGIC ADD-ON BOARD
17	XSB069	FORMULA SELECT COVER & MEMBRANE
	XSB731	PVDF BSP IN&OUT EPDM BLUE 5PK
18	XSB732	PVDF NPT IN&OUT EPDM PURPLE 5PK
	XSB733	BSP IN&OUT EXT VIT RED 5PK
	XSB734	NPT IN&OUT EXT VIT YELLOW 5PK

BRIGHTWELL DISPENSERS LTD

Unit 1, Rich Industrial Estate, Avis Way, Newhaven, East Sussex, BN9 0DU, UK

T +44 (0)1273 513 566 F +44 (0)1273 516 134 E sales@brightwell.co.uk W brightwell.co.uk

VAT No: GB 100 1998 47. Company registration No: 0661996. Registered in England.

BRIGHTWELL
REVOLUTIONARY DISPENSING SOLUTIONS

Item	Stock Code	Description
19	XSB721	MEMBRANE CLAMP ASSEMBLY 3/8 BSP
	XSB722	MEMBRANE CLAMP ASSEMBLY 3/8 NPT
	XSB727	CLAMP PLATE ASSY BSP PVDF
	XSB728	CLAMP PLATE ASSY NPT PVDF
	XSB729	CLAMP PLATE ASSY BSP PP
	XSB730	CLAMP PLATE ASSY NPT PP
20	XSB727	1/4 STRAIGHT - 6MM BARBED TUBE CONNECTOR (BLACK) 10
	XSB728	1/4 STRAIGHT - 8MM BARBED TUBE CONNECTOR (BLACK) 10
	XSB729	3/8 STRAIGHT - 10MM BARBED TUBE CONNECTOR (BLACK) 10
	XSB730	3/8 STRAIGHT - 3/8 BARBED TUBE CONNECTOR (WHITE) 10
21	XSB107	HF ADD-ON LID ASSY
22	XSB106	LOGIC HF CONTROL LID ASSY
23	XSB740	8MM BARBED CONN. 3/8 FIT 10PK
	XSB718	10MM BARBED CONN. 3/8 FIT 10PK
	XSB719	12MM BARBED CONN. 3/8 FIT 10PK
24	XSB720	3/8 QUICK COUPLINE 10PK

BRIGHTWELL DISPENSERS LTD

Unit 1, Rich Industrial Estate, Avis Way, Newhaven, East Sussex, BN9 0DU, UK

T +44 (0)1273 513 566 F +44 (0)1273 516 134 E sales@brightwell.co.uk W brightwell.co.uk

VAT No: GB 100 1998 47. Company registration No: 0661996. Registered in England.

BRIGHTWELL

REVOLUTIONARY DISPENSING SOLUTIONS